



# REGOMS PRODUCT DATASHEET

---

ZONE 2 425CFM AIR COMPRESSOR

## Zone 2 425cfm Air Compressor



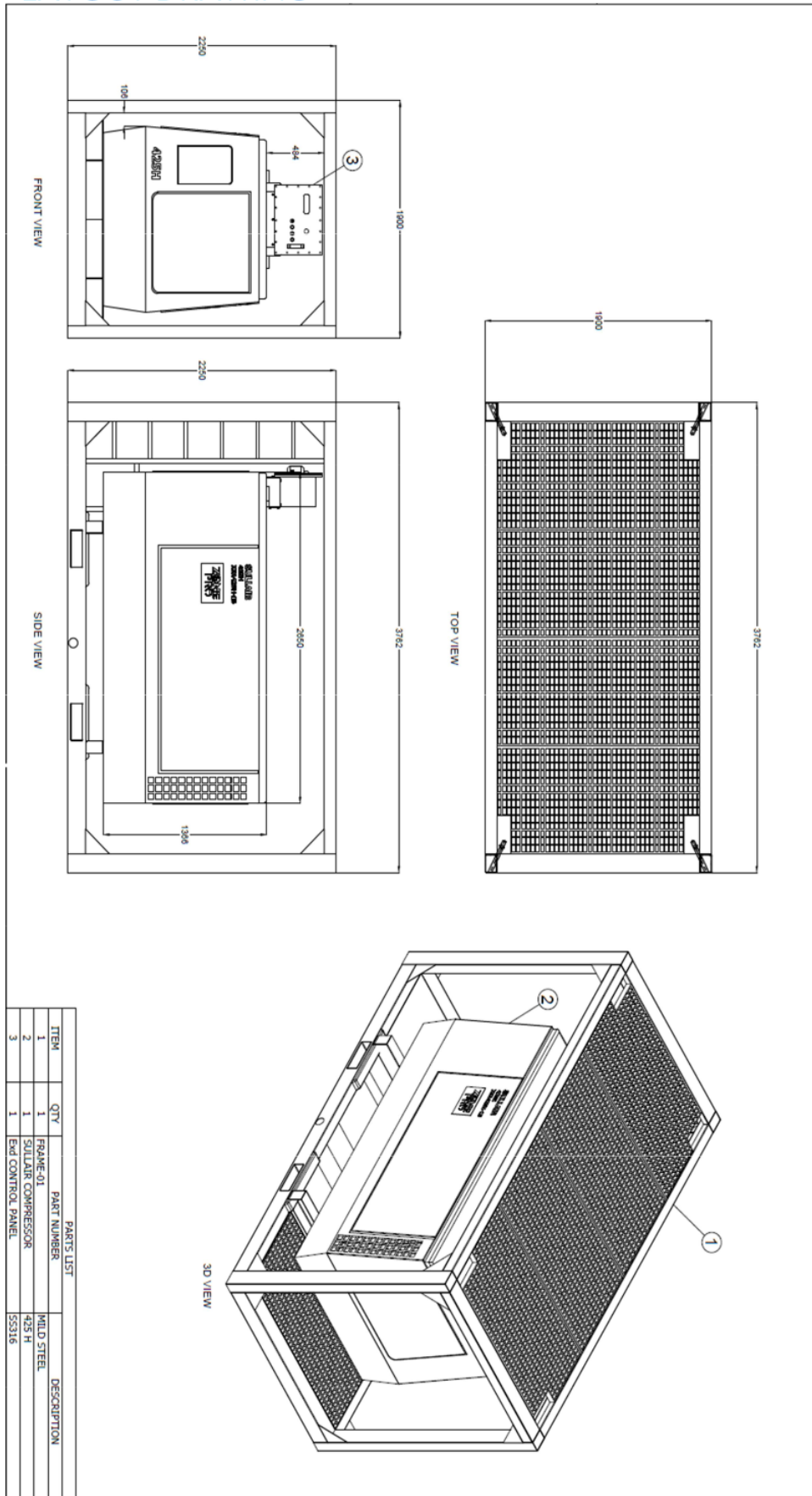
**FOR ILLUSTRATION PURPOSES ONLY**

The X5A425H-15 is a one stop solution of standalone compressor unit rated up to 425cfm. Custom design for (Zone 2) Hazardous area and is ATEX compliant packaged in a LR certified EN12079-1:2006 & DNV 2.7-1 in support of IMO MSC/Circ. 860(1998) Offshore Lifting Skid. The X5A425H-15 is designed for easy and straight forward operations with multiple opening access to ease maintenance works. The unit operates in ambient temperature of -20dego C TO + 49dego C, suitable for both warm and cold weather operations. Unit sound pressure level (SPL) is below 85dBA@1m distance.

SPECIFICATION	DESCRIPTION
MAIN FEATURES	<ul style="list-style-type: none"> <li>❖ Class BV certified</li> <li>❖ Tier 3 Emission Compliant Engine</li> <li>❖ Multiple openings for easy access of maintenance</li> <li>❖ Safety requirements of the ATEX 94/9/EC Ex Group IIA</li> </ul> <p>Category 3G T3</p> <ul style="list-style-type: none"> <li>❖ Electric starter</li> <li>❖ 12 hours continuous running</li> <li>❖ Screw rotary type 1 compression cooled</li> <li>❖ 3 output air valves 1/2:" 3/4" and 1 1/4"</li> <li>❖ Compact and easy to function</li> <li>❖ Operating pressure range 3.8Bar(60Psi) – 10.3Bar(150Psi)</li> </ul>
SAFETY FEATURES	<ul style="list-style-type: none"> <li>❖ Air intake Shut off valve</li> <li>❖ Exhaust outlet spark arrestor</li> <li>❖ Ex Alternator</li> <li>❖ Ex d Control Panel</li> <li>❖ Engine over speed Protection</li> <li>❖ High Coolant temperature sensor</li> <li>❖ Low engine oil pressure</li> <li>❖ Ex Fuel shut off system</li> </ul>

<b>X5A425H-15 OVERALL SPECIFICATION</b>	
FRAME	GB-LR 22071-05/2012
MODEL	X5A425H-15
RATED DISCHARGE PRESSURE in Bar (Psi)	10.3(150)
NOMINAL CAPACITY FLOW IN m3/min (CFM)	12(425)
WORKING PRESSURE RANGE Bar( PSI)	3.8(50)
TOTAL WEIGHT IN (KG)	3520
OUTLINE DIMENSION (FRAME ) : L x W x H in (mm)	3774*1900*2250
<b>DIESEL ENGINE</b>	
MANUFACTURER	CUMMINS
MODELS	QSB5.9-C 150-31
FULL LOAD /NO -LOAD SPEED (RPM)	2250/1600
RATED POWER BHP (KW)	154(113)
DISPLACEMENT L (in <sup>3</sup> )	5.9(360)
WATER TANK CAPACITY L (U.S.GAL)	20(5.2)
ENGINE OIL CAPACITY (U.S. GAL)	12.5(3.3)
FUEL TANK CAPACITY (U.S.GAL)	160(42.3)
ELECTRICAL SYSTEM WORKING VOLTAGE (V)	24
RATED CAPACITY OF BATTERY C20 (A.H)	180
<b>COMPRESSOR</b>	
SPECIFICATION OF AIR SUPPLY VALVE	1-Rp1/2, 1-Rp3/4, 1-Rp 1'1/4
Fluid Capacity L (U.S.GAL)	38.5(10.2)

LAYOUT DRAWING



For a quotation and detailed pricing, please contact our sales team:

**REGOMS Engineering (M) Sdn. Bhd.**

No. 10-1, Jalan 13/48A, The Boulevard  
Shop Office Sentul Raya, Sentul Selatan,  
51000 KL. WP.

Malaysia

Tel: +603 2858 2600

Email: [sales1@regoms.com](mailto:sales1@regoms.com)

**REGOMS Australia Pty Ltd.**

Level 1, 16, McDougall Street,  
PO Box 1279, MILTON QLD 4064

Australia

M: +614 0008 4977

F: +617 3198 2401

E: [sri@regoms.com](mailto:sri@regoms.com)

<https://www.regoms.com>

*Any modification of the content, duplication or reprinting of this datasheet, as well as any distribution to third parties - even in parts - shall require the express written approval of REGOMS.*